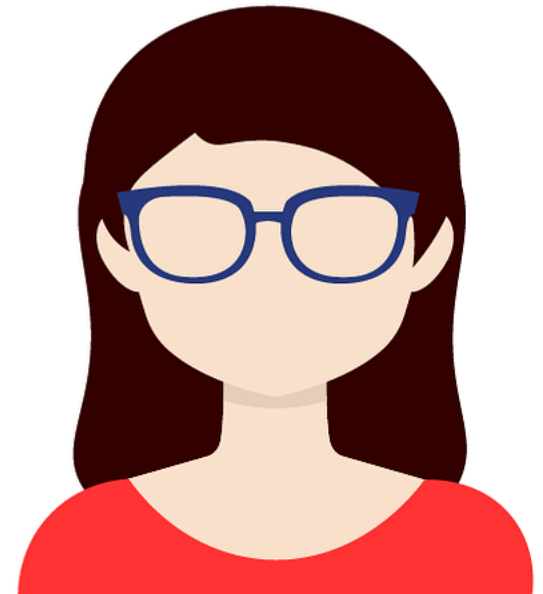
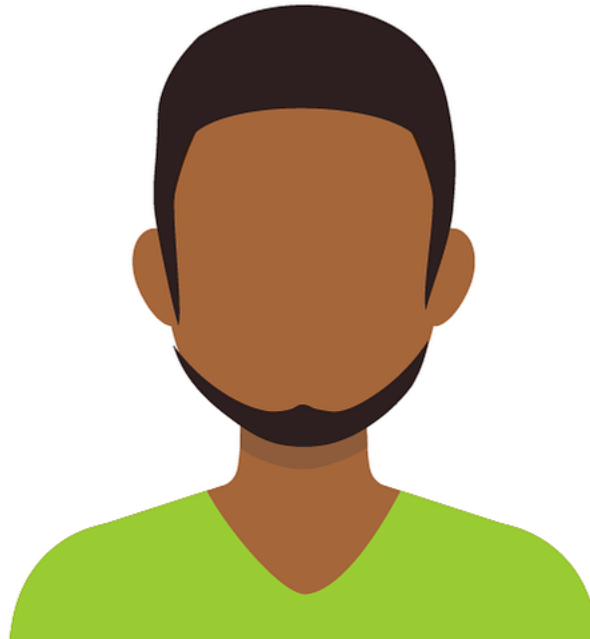
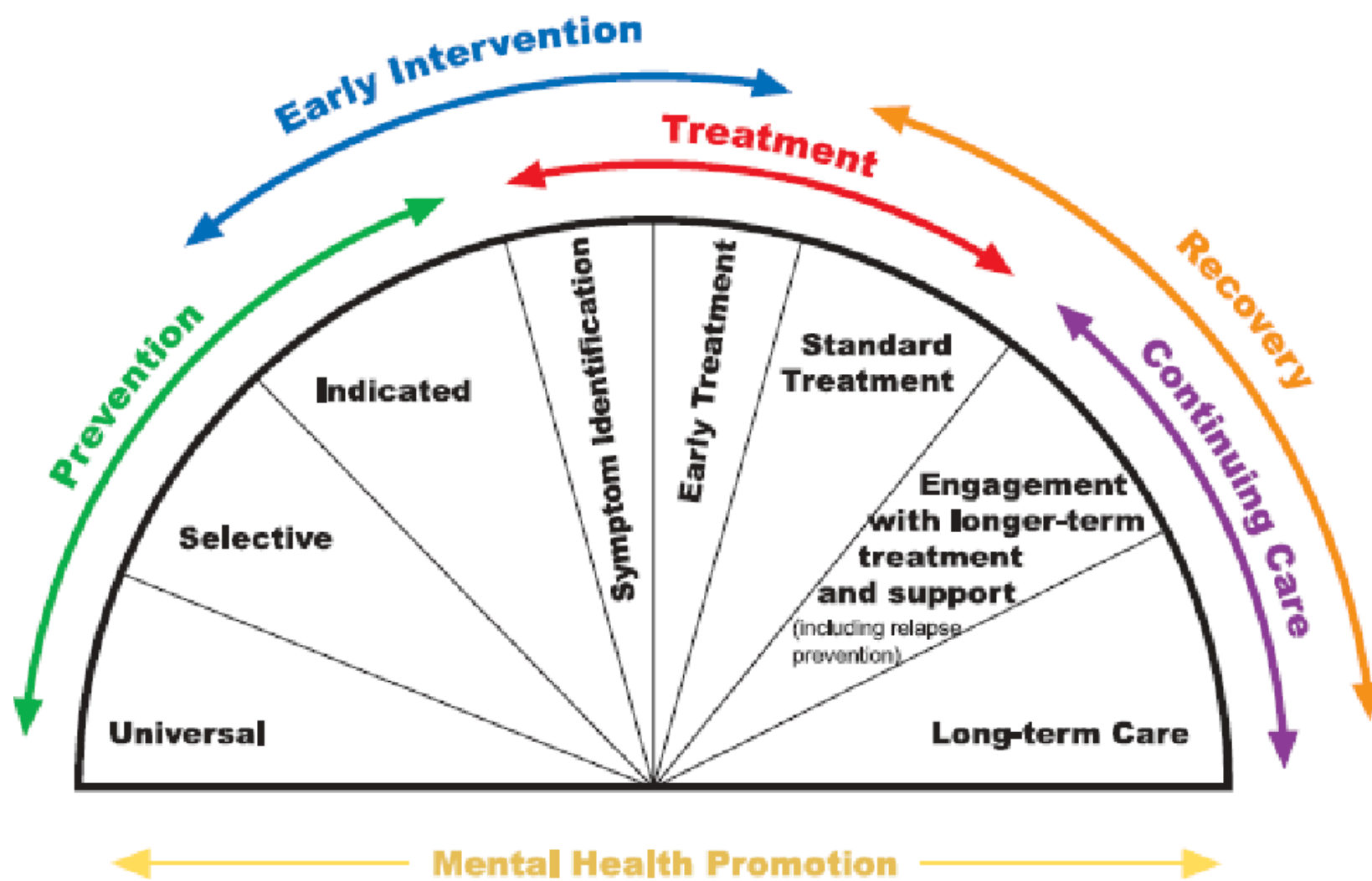


Evidence-based **programs** vs Evidence-based **practices**

*Programmes fondés sur des preuves vs **pratiques** basées sur des preuves*





✗ Harmful (iatrogenic)
“This program has been rigorously evaluated and shown to be harmful”

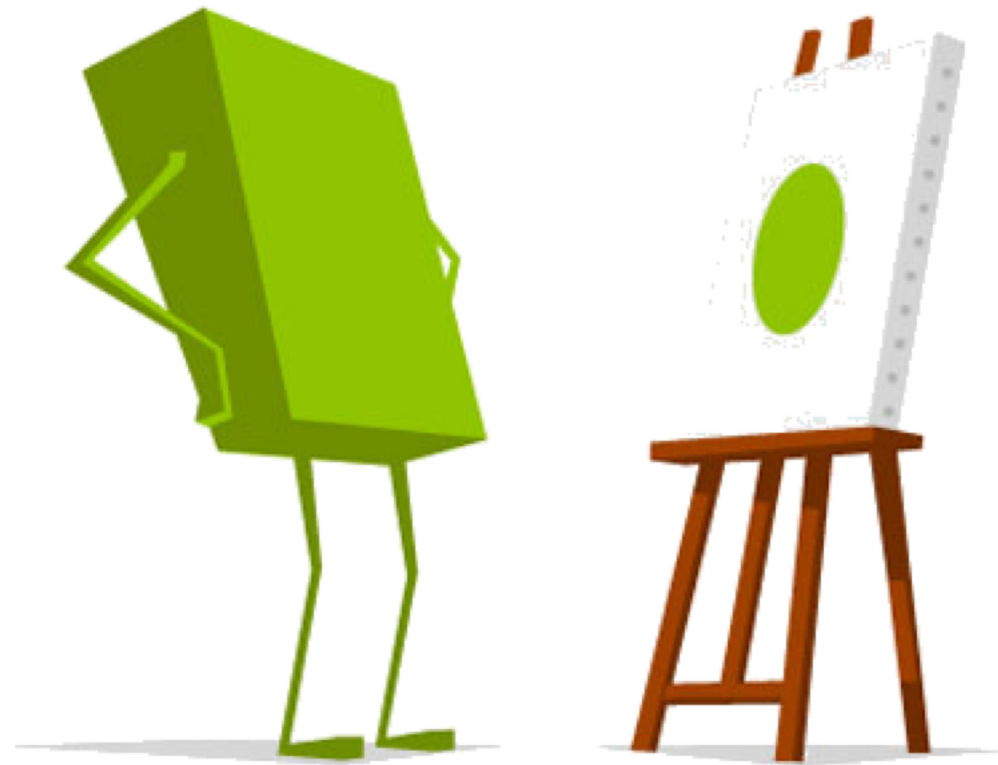
Best practices
“We’ve done it and we like it”

✓ Research-based
“This program based on sound theory informed by research”

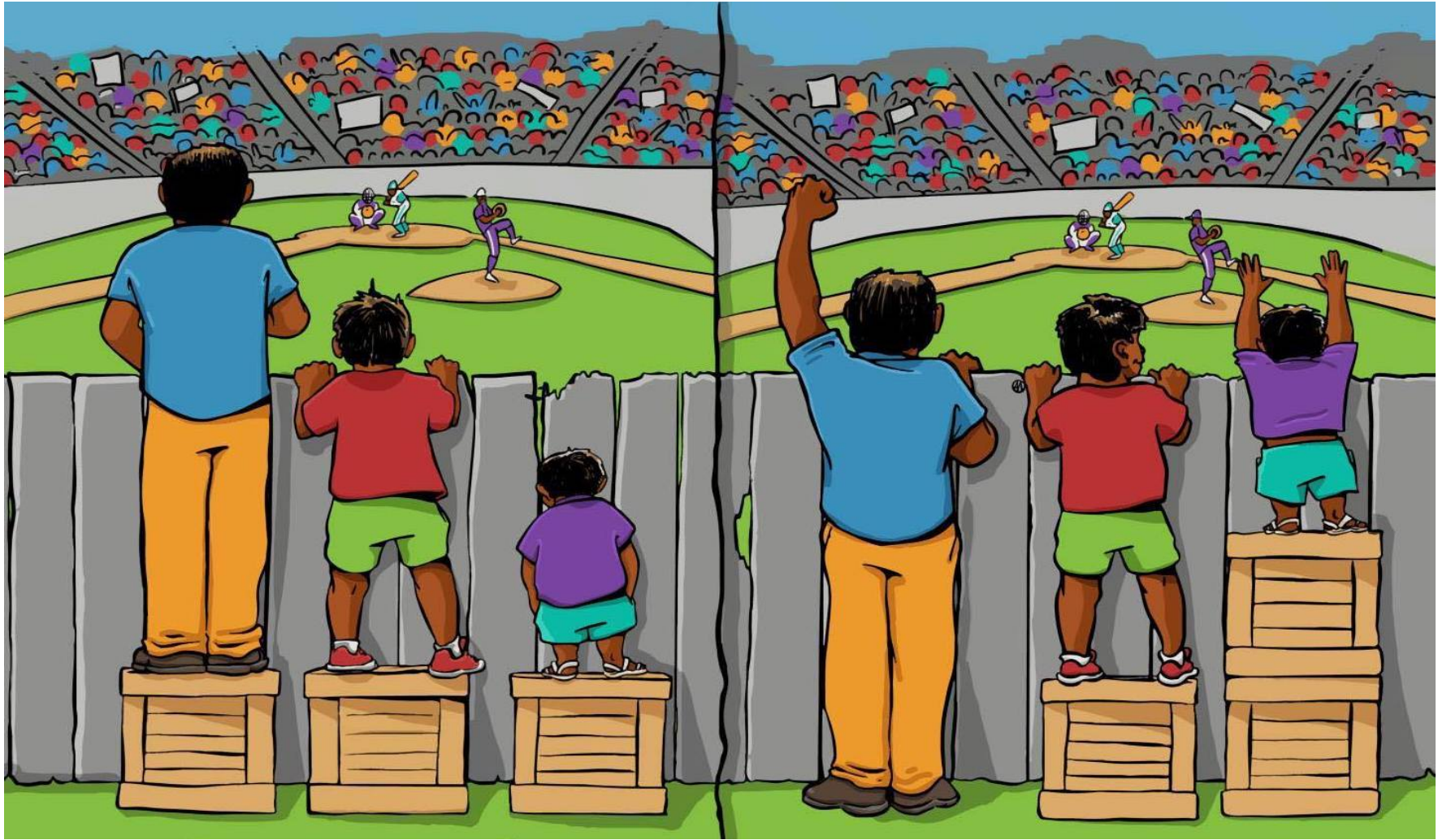


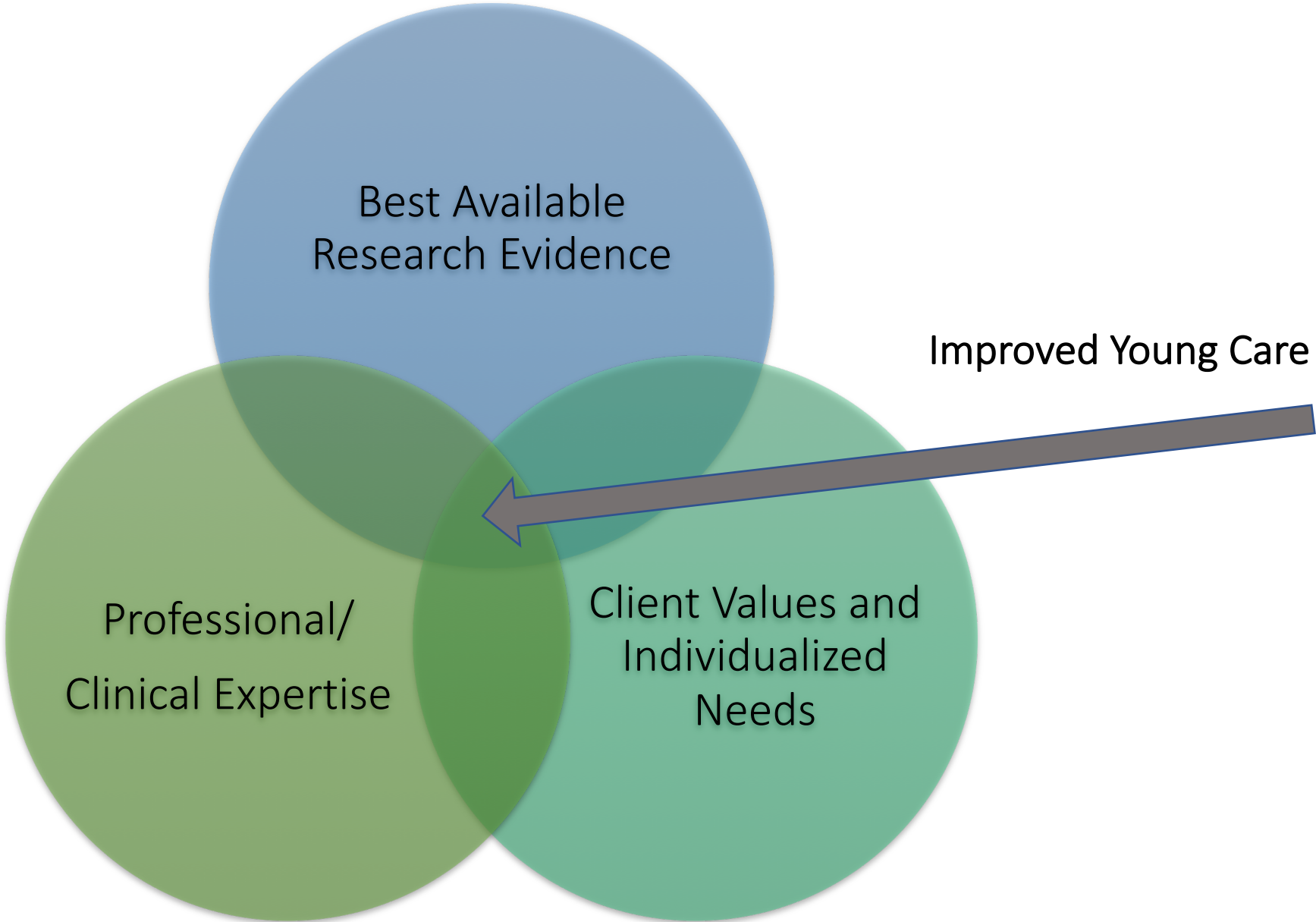
✗ Ineffective
“This program has been evaluated and shown to have no positive or negative effect”

✓ Evidence-based
“This program has been rigorously evaluated and shown to work”









Evidence-based programs



Evidence-based practices